



GRINNELL COLLEGE

Impact: The 2015-2016 Philanthropy Report



Grinnell ranks **1st** for economic diversity  
among 25 top-ranked national liberal arts colleges.

— *U.S. News & World Report*



## You Bring the Vision to Life



As we work toward fulfilling our promise of a distinctive education for every student, we are grateful for your help in turning our vision for the College into meaningful, real-world experiences in the lives of Grinnellians. In 2015-16, we were able to take a number of remarkable steps toward ensuring Grinnell's distinctiveness and in elevating its reputation as one of the defining liberal arts colleges in the United States.

The Board of Trustees voted last fall to renew our commitment to need-blind admission and to meet all demonstrated need of admitted domestic students. This year, *U.S. News & World Report* ranked Grinnell first for economic diversity among 25 top-ranked national liberal arts colleges. Our Center for Careers, Life, and Service (CLS) began the 2015-16 academic year by assigning first-year students a CLS adviser on day one. This new approach helps students chart their post-college course with meaning and purpose from the very beginning of their Grinnell experience.

The past year saw approval of the schematic design and early site preparation for the new Humanities and Social Studies Complex (HSSC), a superior learning space that will foster exciting intellectual collisions between and among disciplines. The HSSC also will provide vibrant physical space for international programming designed to help students think across cultural boundaries, including the newly established Institute for Global Engagement, Off-Campus Study, the Office for International Student Affairs, and a new Language Resource Center.

A transformative gift made in April 2016 by Life Trustee **Carolyn "Kay" Swartz Bucksbaum '51** created a new chief global officer position and the Global Grinnell Distinctiveness Fund. The fund will make possible internships abroad, scholarships for global course work and language studies, and faculty and student research focused on collaborative, international projects exploring global

problems and challenges. This builds on a gift from Trustee **Susan Holden McCurry '71** and the **Roland and Ruby Holden Family Foundation** to create the McCurry Global Scholars Program in which First-Year Tutorial classes go on monthlong, faculty-led trips to conduct comparative study in multiple countries.

This support is already making a difference in the way students think ethically about global concerns. **Joy Suh '19** traveled to Germany and France last spring as part of a Global Learning Program (GLP) tutorial. She said of her experience, "It is one thing to learn about a topic, but it's entirely different to study the intolerance of the Holocaust by actually visiting a concentration camp. It is much more real when you are standing and staring at blood-stained walls. As for my future curriculum, the GLP for the first time in my life made me want to study a foreign language, so I plan on taking French."

Helping students gain a global perspective reflects but one element of our long-term vision. Your support helps expand the entire student experience, from international internships to student research opportunities. It ensures that our broadly diverse intellectual community continues to thrive. Whether your gift reflects a specific affinity to one aspect of the College or supports every student on campus through the Pioneer Fund, your support enhances our ability to deliver innovative programs and ensures that they have the greatest impact on students.

Again, thank you for an exceptional year. It is your generosity and support that brings our vision for the College to life.

A handwritten signature in blue ink, appearing to read "Raynard S. Kington".

**Raynard S. Kington**  
President

## Alumni and Friends



Welcome to Grinnell College's *Impact: The 2015–2016 Philanthropy Report*. Last year, we surveyed our donor community to gauge your reaction to and engagement with the honor roll. We used your responses to craft this year's edition and are thankful that you provided such a rich set of ideas. We will continue to assess the prudent use of our budget resources with an eye toward thanking you in the most fiscally and environmentally responsible way. We hope you like the redesign!

On behalf of our students, faculty, and staff, we are extremely thankful for the collective impact of our donor community. New philanthropic commitments to Grinnell College in fiscal year 2016 reached \$26,973,773, an increase of more than \$3.6 million, or 15.5 percent, in new gifts, new pledges, and new bequests over the previous year.

Total receipts — one-time gifts, payments on pledges, and realized bequests — reached \$10.9 million.

Last year 7,098 alumni made gifts to the College, an increase of 3.9 percent over the previous year. Of alumni donors, 245 made their first-ever gifts to the College. Overall, Grinnell welcomed 1,407 first-time donors in FY16. In all, 11,375 individuals — including alumni, faculty, students, staff, friends of the College, and parents of current and former students — were donors to the College. Among these, the largest number of donors (7,711) made unrestricted contributions.

Every gift to Grinnell College matters because it is part of a cumulative effort to make the College stronger and more effective in serving our mission. When Grinnell alumni and friends band together, great things happen — such as the one-day giving record set during our second annual Scarlet & Give Back Day on April 7.

On this day 3,376 individuals gave to the College, an increase of more than 75 percent over last year's 1,922 donors.

You give to Grinnell for many reasons — but with the ultimate aim of transforming young people's lives through the Grinnell experience, helping them become the kind of people who combine deep thought with expansive compassion. While we celebrate these elevated levels of generosity, please consider the ultimate impact of your work and gifts. Together we know that your gifts are not gifts to Grinnell; rather, they are gifts that flow *through* Grinnell to extend the mission of this wonderful place. Once again, I commend each of you on a fantastic year. I share my deepest sense of gratitude and appreciation for all that each of you does for Grinnell College!

Yours for Grinnell,

A handwritten signature in blue ink, appearing to read 'Shane', with a stylized flourish at the end.

**Shane Jacobson**

Vice President for Development and Alumni Relations





**11,375**  
individuals —  
including alumni,  
faculty, students,  
staff, friends  
of the College, and  
parents of current  
and former  
students — were  
donors to the  
College.





New philanthropic commitments to Grinnell College in fiscal year 2016 reached **\$26,973,773**, an increase of more than **\$3.6 million**, or **15.5 percent**, in new gifts, new pledges, and new bequests over the previous year.





## Donor Bill of Rights

Philanthropy is based on voluntary action for the common good. It is a tradition of giving and sharing that is primary to the quality of life. To ensure that philanthropy merits the respect and trust of the general public and that donors and prospective donors can have full confidence in the not-for-profit organizations and causes they are asked to support, we declare that all donors have these rights:

1. To be informed of the organization's mission, of the way the organization intends to use donated resources, and of its capacity to use donations effectively for their intended purposes.
2. To be informed of the identity of those serving on the organization's governing board, and to expect the board to exercise prudent judgment in its stewardship responsibilities.
3. To have access to the organization's most recent financial statements.
4. To be assured their gifts will be used for the purposes for which they were given.
5. To receive appropriate acknowledgment and recognition.
6. To be assured that information about their donations is handled with respect and with confidentiality to the extent provided by law.
7. To expect that all relationships with individuals representing organizations of interest to the donor will be professional in nature.
8. To be informed whether those seeking donations are volunteers, employees of the organization, or hired solicitors.
9. To have the opportunity for their names to be deleted from mailing lists that an organization may intend to share.
10. To feel free to ask questions when making a donation and to receive prompt, truthful, and forthright answers.

The text of this statement in its entirety was developed by the Association of Fundraising Professionals (AFP), Association for Healthcare Philanthropy (AHP), Council for Advancement and Support of Education (CASE), and the Giving Institute, consultants to nonprofits.

This report, and the online Honor Roll, is published annually by the Office of Development and Alumni Relations. The online report is intended to include the names of all donors who made gifts to Grinnell College during the July 1, 2015, to June 30, 2016, fiscal year or who volunteered their time. If your name has been misspelled, entered incorrectly, or unintentionally omitted, we apologize. We make a sincere effort to correctly list and thank all of our donors. If you have any questions or believe an error has occurred, please notify us by writing:

Office of Development and Alumni Relations  
Grinnell College  
Grinnell, IA 50112

Or call us at 641-269-1846 or 866-850-1846

Send address changes and other updates to:

Kelly Garwood  
Office of Development and Alumni Relations  
Grinnell College  
Grinnell, IA 50112-1690

FAX: 641-269-3222  
Email: [alumni@grinnell.edu](mailto:alumni@grinnell.edu)

A limited number of printed copies of the Honor Roll is available for members of the Grinnell community who cannot easily access the online version. To request a printed copy, please send an email to [stewardship@grinnell.edu](mailto:stewardship@grinnell.edu) or call 866-850-1846. You can also write to Grinnell College, Office of Development and Alumni Relations, Grinnell, IA 50112.

## Enrollment and Financial Aid

Grinnell's student body continues to grow more diverse, as reflected in some of the statistics about the class that entered in fall 2015. The students are diverse not only in terms of race and ethnicity, but also geographic origins, family income, gender identity, and whether their parents earned four-year college degrees.

Although the costs of educating our students rise, so does our financial aid. Thanks in part to your gifts, Grinnell is able to offer financial aid to all admitted students, regardless of their ability to pay.

### DONOR IMPACT

Without question one of the most impressive acts of kindness is to invest in the lives of our students. You partner with Grinnell's endowment to uphold the traditions of access and affordability through our need-blind policies. Many alumni were only able to achieve their collegiate and professional goals because of others who chose to give-back to support their financial aid scholarships. This lesson is perpetuated in today's students. Your gifts provide our scholars with the resources they need to prepare for lives of purpose, lessons they carry into their careers and communities as they embody the mission and values of their alma mater.

## CLASS OF 2019

### Fun facts

**24%** U.S. students of color

**17%** international students from 27 countries

**16%** first-generation college students

**20** are "Chips"—kids of Grinnell alumni

**Top 5** states represented:

Illinois  
Iowa  
Minnesota  
California  
New York

**Admit rate**  
was **24.9%**,  
**lowest in College's history**

### 2015–16 Cost of attendance

Tuition and fees:

**\$46,990**

Room and board:

**\$11,408**

Total comprehensive fee:

**\$58,398**

### 2015–16 Financial aid

**69%** received need-based aid

**22%** of domestic students were eligible for federal Pell Grants





### Financial aid 2015–16 overall

Average need-based aid package:

**\$45,009**

**\$58.7 million**

in aid awarded — **87%** of it in  
form of grants or scholarships



### Geographic origins of student body as a whole

**85%** United States

**19%** West

**12%** South

**43%** Midwest

**11%** Northeast

**15%** Other countries

## Finance and Operations

As you know, the Grinnell experience is distinctive. Students served by this College have daily access to faculty who work at the top of their fields. These same students have opportunities to engage in diverse and relevant experiential learning opportunities along individually-advised and research-oriented curricular endeavors. Grinnell students also have unique opportunities to experience diverse perspectives and global cultures as part of their everyday plan of study. The affinity they develop for Grinnell during their four years is truly unique and our alumni are a living tribute to the exceptional educational experience Grinnell offers.

Resources that underpin this experience make Grinnell the unique place that it is. The ability to serve in this way relies not only on your generosity but on Grinnell's ability to be an effective steward of the gifts which have been shared with the College across generations. With your help and through efficient management of our resources, we meet Grinnell's commitment of providing an exceptional experience to students — regardless of those students' financial resources.

**Total Endowment Value**  
(as of June 2016):

**\$1.65 billion**

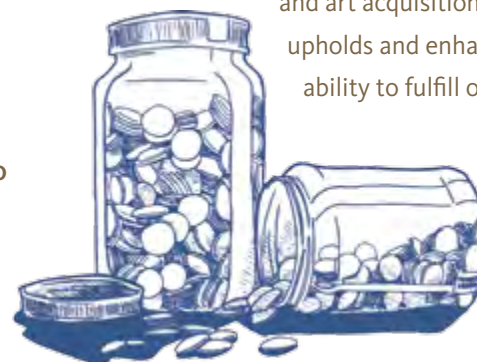
### Endowment Spending Policy:

The Board of Trustees approved a spending policy that calculates **4%** of the 12-quarter moving average of the endowment market value. The policy also stipulates that the 4% spend cannot be fully spent on the operating budget.

Philanthropy is still the basis for a sustained and growing endowment that supports the College's, and our students', aspirations. In 2015-16, approximately 30% of total endowment revenue came from donor-restricted endowment funding. Donor gifts to the endowment — establishing funds to support scholarships, internships, professorships and chairs, prizes and fellowships, library

and art acquisitions, and more — upholds and enhances Grinnell's ability to fulfill our students' greatest needs while offering

transformative experiences both in and out of the classroom.

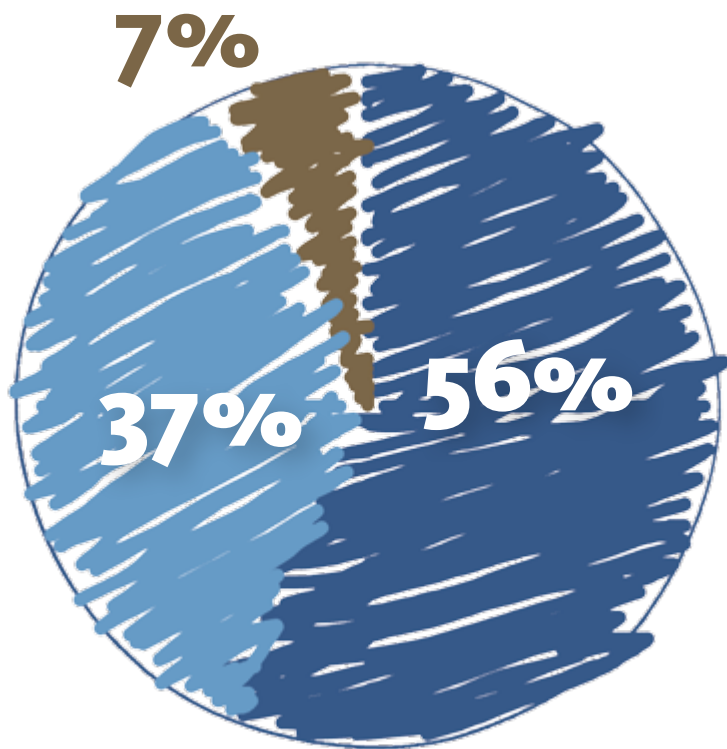


### DONOR IMPACT

Donors make many choices when deciding to support the college. Some establish named endowments, such as new funds that create internships; launch new course-embedded travel; add to student research grants; or create new professorships and chairs. Others give current use gifts (non-endowment) to support the Pioneer Fund; name classrooms or faculty offices to help build new spaces for 21st century teaching and learning; add resources to help coaches recruit future athletes; extend guest lectureships; or fund music lessons. These examples only name a few of the many ways benefactors support Grinnell. For us, these charitable acts reinforce that donors don't give to the institution, rather they give through Grinnell to positively touch the lives of our community every day.



**Institutional Revenue Sources  
in 2015–16 (unaudited):**



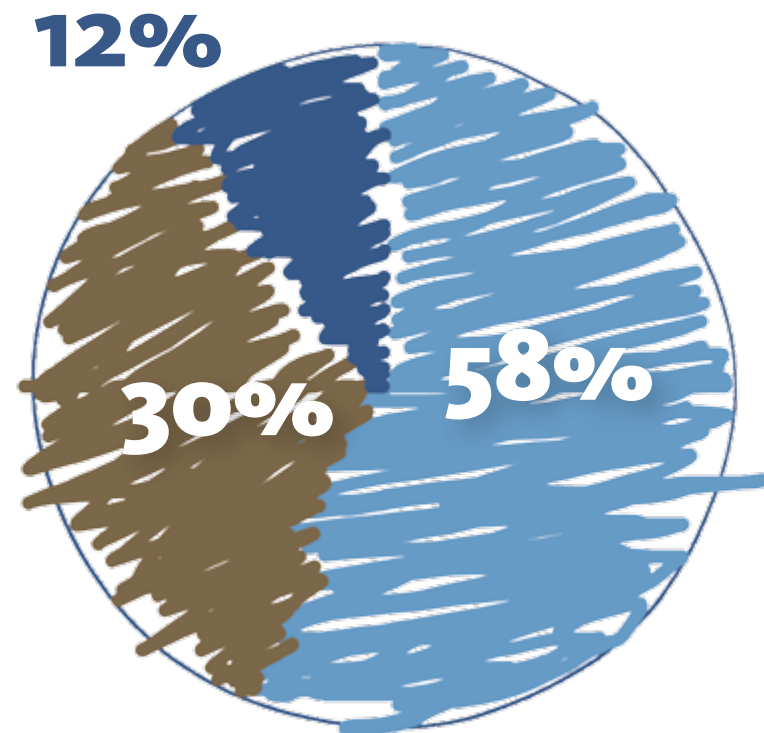
**ENDOWMENT: \$69.5M or 56%**

**NET STUDENT REVENUE: \$44.9M or 37%**

**GIFTS AND OTHER INCOME: \$8.8M or 7%**

**TOTAL: \$123.3M**

**Allocation of Resources Supporting  
Students in 2015–16 (unaudited):**



**PEOPLE: Compensation and Benefits (faculty, staff and students):  
\$67.4M or 58%**

**PROGRAMS: Program Budget: \$35.5M or 30%**

**PLACE: Capital Reserves and Debt Service: \$12.9M or 12%**

**TOTAL: \$115.8M**

## What do things cost?

You may wonder about what our program budget supports. Everything costs money, which is why donor gifts are key to making sure Grinnell students continue to get one of the best liberal arts experiences on the planet.

Here are a few examples of the ways your dollars are put to work:



Water test kit to measure: nitrite/  
nitrate, phosphate, turbidity, chloride,  
flow at CERA: **\$105/kit**

Music licensing  
fees for public  
performance,  
annual:

**\$1,310**

*Flu shots for students, staff,  
and faculty: **\$13,000***

Academic Advising  
semester calendar  
(one copy): **10 cents**

Language tutors  
for one semester:  
**\$5,350**

**Garden seed  
for the campus  
garden:  
\$50–\$100**

Transport one visiting prospective  
student to and from airport: **\$100**

Groceries for International  
Student Organization (ISO) Food  
Bazaar last year: **\$3,900**





Officials for  
one football  
game:  
**\$1,120**

*Student staff  
for one Harris  
Center event:*  
**\$150**

Airfare for most  
Rosenfield Program  
speakers:  
**\$500–\$600**

One color-  
changing  
LED  
theatrical  
light:  
**\$2,200**



Colored powder for  
Festival of Colors: **\$39.75**

# Gifts

A gift to Grinnell College is a meaningful statement of your belief in the mission of the institution and its ability to provide students with a transformative liberal arts education. Whether you support our Pioneer Fund, make life-changing opportunities for internships possible, or establish an endowed fund, your gifts to Grinnell are deeply appreciated.

Annual gifts to Grinnell allow the College to provide support to students, faculty, programming, facilities, and much, much more. Philanthropy provides the fuel to power and sustain Grinnell and the innovative experiences it offers.

Thank you for your outstanding and important support of Grinnell.

## DONOR IMPACT

Your gifts are paired with thousands of others as part of a story that describes the very essence of the greater-Grinnell family. Together, we all play important roles that bring rise to the relative strength of a Grinnell education. We are thankful that you have joined with us to be a part of the culture of philanthropy. We aspire to grow and sustain the number of donors who support us through the giving channels of annual gifts, multi-year pledges, and estate commitments. As we build more relationships with our base of alumni, faculty, staff, parents, students, and friends, we have found that a growing number are interested in using all three channels to maximize the total impact of their gifts. Donors are thinking more creatively and strategically as they align their future support of Grinnell. This creates legacies that will last the test of time!

## 2015–16 Giving at a Glance

7,098  
alumni donors

290  
members of  
the Asa Turner  
Associates

1,407  
first-time donors

## 2015–16 Gift Commitments\*



### FY16 Commitment Dollars

Unrestricted .....	\$5,813,856
Restricted .....	\$4,526,745
Capital .....	\$1,566,044
Endowed .....	\$15,067,128

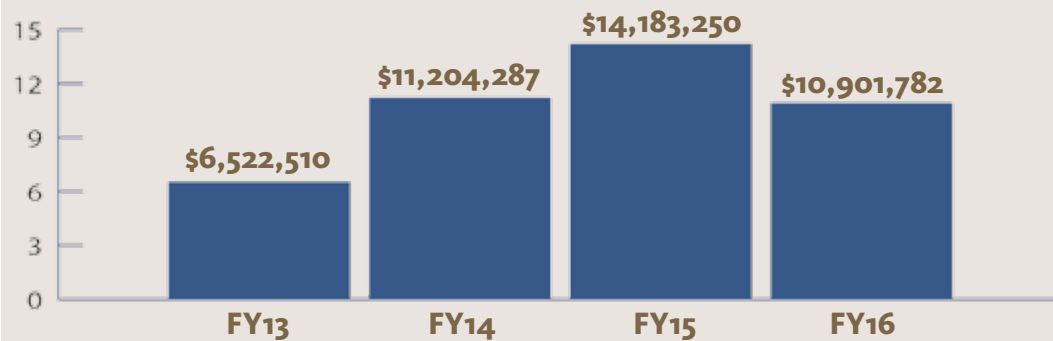
**Total: \$26,973,773**

**\*Commitments: new one-time gifts and pledges.**  
Commitments are a combination of gifts received and gifts we expect to receive in the future.

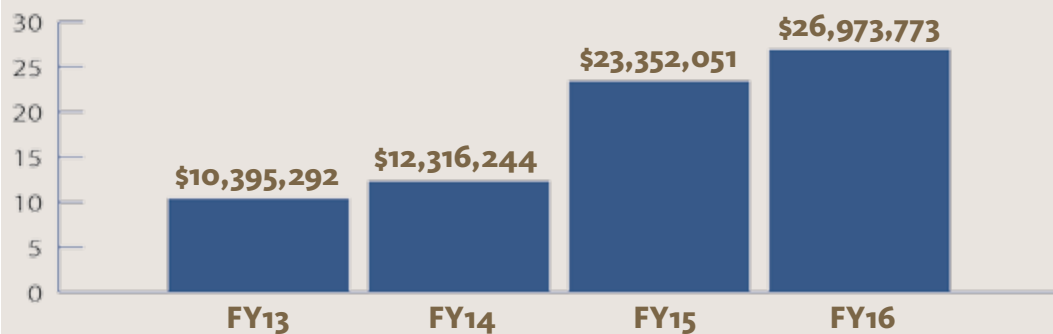




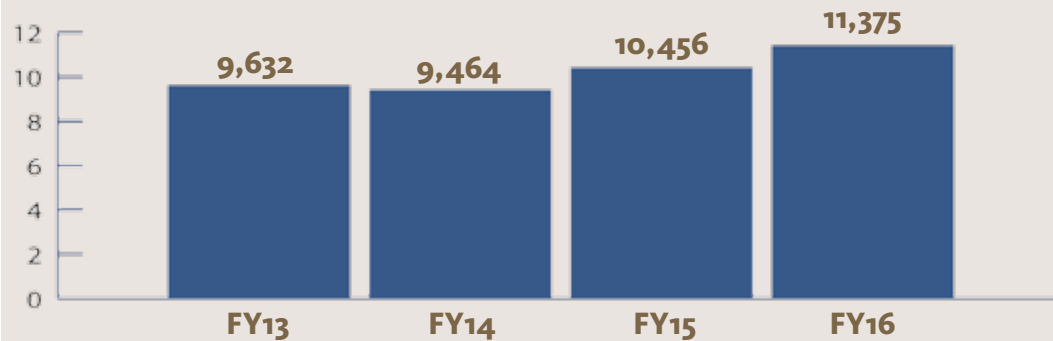
**Gift Receipts**



**Total New Gifts and Pledged Commitments**



**Total Donors**



# Asa Turner Associates

In 1843, 10 men joined Asa Turner on the frontier and organized into what became known as the “Iowa Band.” They came to Iowa with an inspired plan: “Each to found a church and all a college.” With this inspired vision of the future, Turner and the Iowa Band established what we know now as Grinnell College.

Asa Turner Associates as a group have chosen to support the College through an estate provision or a deferred gift, helping to make it possible for Grinnell to continue the work of Asa Turner and his followers.

We are pleased to recognize the following funds supported, or created, through a documented planned gift during the 2015–16 year.



Asa Turner

**A listing of all Asa Turner Associates can be found in the online Honor Roll of Donors.**

## Class of 1962 Scholarship

This endowed scholarship was originally established in 1999 by Arthur Staubitz and **Linda Miller Staubitz '62**. In 2007, the Staubitzes agreed to rename the scholarship to honor the class of 1962. The scholarship provides full tuition support for one student every four years. To date, this fund has supported three Grinnell students. In 2015–16, the following donors established a planned gift to support this scholarship:

**Duane W. '61 and Mary Alyce Luschen Krohnke '62**  
**William P. and Susan Fox McKnight, both '62**  
**Linda Miller Staubitz '62**  
**Lee D. Weisel '62**

## Class of 1966 Scholarship

Through the leadership of an anonymous planned gift donor, and with gifts and pledges from many classmates, this endowed scholarship was established by the class of 1966 to commemorate their 50th Reunion in June 2016. The class established this fund with the purpose of providing a scholarship for a Grinnell student who demonstrates financial need and is in good academic standing.

## Armando Alters Montaña '12 Writers@Grinnell Endowment

**Armando Alters Montaña '12**, known to friends as Mando, was a beloved figure on campus. He was a dedicated writer and editor on *The Scarlet and Black*, who through his talent, energy, and considerable charm managed to earn the respect of some of the country's leading journalists and media figures. Mando was doing what he loved — serving an internship with the Associated Press in Mexico City — when he died

tragically, only weeks after his graduation. Through a bequest, Mando's parents **Diane Alters '71** and Mario Montaña, have created the Armando Alters Montaña '12 Writers at Grinnell Endowment Fund. The fund will support the Writers@Grinnell program in memory of their son's dedication to nonfiction and fiction writing, journalism, and the creative process.

## Class of 1964 Endowed Scholarship

Established by the class of 1964 as part of their 50th Reunion in 2014, this scholarship is for the benefit of students who demonstrate high financial need and are in good academic standing at the College. Extending her leadership with the class, **Marilyn Nelson McIntyre '64** has committed to supporting this scholarship fund through her estate.

## History and Financial Aid

**Amy R. Aulwes '88** and Warren Zola have made an estate gift commitment to support two areas at the College, the Department of History and Financial Aid. Amy graduated with a degree in history from Grinnell and is forever grateful for the financial aid help she received from the College to make her education possible.

## Perpetua Fund

**Andrés D. Chang '05** has made a planned gift provision that will add to the scholarship fund he established in 2014–15. This fund aids the College's core mission of attracting, retaining, and preparing excellent students and forming global citizens who will do their part to further the ideals of truth and social justice.



## Seidenman Scholarship

**Nina F. Seidenman '72** came to Grinnell from Geneva, Switzerland. She and her husband, Bill Moore, established this scholarship with a gift from their estate to support an international student who chooses to study art or languages while at Grinnell.

## Wesley Davies Fellowship

**Wesley Davies '40** earned his degree in history from Grinnell before spending his career at the Veterans Administration as a Planning Officer focused on Policy and Evaluation. He and his wife, **Dorothy Ziegenmeyer Davies '39**, established this fellowship to enable advanced history students to collaborate with faculty on topical research.

## Guerin Scholarship

This scholarship fund was established with a planned gift by **George A. Guerin '61** to honor his father, Herbert A. Guerin. Herbert Guerin was a professional engineer who recognized the need for well-rounded engineers and scientists. Students who major in biological chemistry, biology, chemistry, computer science, mathematics, or physics will benefit from this scholarship.

## Intercollegiate Athletics

**Michelle Raymer Joy '96** was a two-sport athlete during her time at Grinnell, earning varsity letters in basketball and volleyball. To honor her athletic experience, Michelle has made a planned gift which will support the Department of Athletics and Recreation.

## International Student Experience Enhancement Fund

**R. Hunt Davis Jr. and Jeanne Gruber Davis, both '61, along with John M. '61 and Catherine Hafey Swenson** have established a fund at Grinnell to enable international students to partake more fully in their Grinnell experience.

## Financial Aid

Grinnell College is one of only 45 colleges and universities in the United States that supports a need-blind admission policy and meets 100 percent of the demonstrated financial need of its students. Scholarship support is vital in the College's ability to give students the opportunity to attend Grinnell College regardless of their family's ability to pay. In 2015–16, the following donors indicated plans to support student financial aid through their estates:

**Evelyn M. Katz '45**  
**Carol King Sovern '54**  
**J. Kenneth Kuntz '56**  
**Katherine Howell Weingart '61**  
**Gerald C. '60 and Mary McKenney Gray '63**  
**Dennis K. '66 and Judith Macdonald**  
**William C. Mohrman '66\***  
**Edmund Gilday**  
**Eugene S. Troy (deceased)**

*\*Mr. Mohrman's gift will also support the Innovation Fund as well as the Rosenfield Program in Public Affairs, International Relations, and Human Rights.*

## Unrestricted

The following donors established an unrestricted planned gift, which allows the College to determine how to use the funds based on its most pressing needs at the time the gift is received:

**C. Durrett McKennie Bortner-Ryder '49 (deceased)**  
**W. Ben '51 and Carolyn Slater Whitehill '54**  
**John G. Reddan Jr. '53**  
**K. Trude Hoffacker '58**  
**Peter J. '64 and Melissa Hicks Nassiff '63**  
**James R. Holbrook '66**  
**Jerri Linn Hart Phillips '66**  
**James W. Randall '66**  
**John H. '67 and Barbara Lewis Uhlemann '70**  
**Stephanie Krueger Cady '69**  
**W. Eugene '70 and Sylvia Prewo**  
**David N. Feldman '71**  
**John W. Seeley '73**  
**Betty Dandridge Johnson '79 and Charles Johnson**  
**Rebecca E. Quirk '86**  
**Kristin E. Stout '89**  
**Christopher D. Doemel '94 (deceased)**  
**James W. Dunn '01**  
**Marion P. Davis (deceased)**  
**Ileta V. Grinnell (deceased)**

## In Progress

The following donors are working with the Office of Development and Alumni Relations to finalize their planned gift intentions:

**VeAnna Christensen Morgan '59**  
**Frances L. Harper '60**  
**Christina Greene Clausen '64**

## 2015–16 Class Participation Statistics

Class Year	Solicitable Class Members*	Donors	% Participation	Money Received
2019	431	95	22.04%	\$1,433.38
2018	431	90	20.88%	\$1,277.95
2017	424	86	20.28%	\$1,036.81
2016	369	190	51.20%	\$6,786.80
2015	447	128	28.64%	\$3,304.45
2014	394	113	28.68%	\$7,799.64
2013	365	112	30.68%	\$7,137.84
2012	458	144	31.44%	\$7,524.95
2011	401	102	25.44%	\$7,276.00
2010	392	131	33.42%	\$7,210.10
2009	379	99	26.12%	\$11,951.00
2008	401	129	32.17%	\$10,340.00
2007	348	88	25.29%	\$7,738.96
2006	332	123	37.05%	\$43,107.57
2005	340	100	29.41%	\$27,695.54
2004	360	102	28.33%	\$19,484.09
2003	314	88	28.03%	\$8,439.00
2002	337	129	38.28%	\$28,400.62
2001	390	152	38.97%	\$39,872.69
2000	336	113	33.63%	\$109,583.38
1999	298	88	29.53%	\$72,868.50
1998	341	108	31.67%	\$29,020.88
1997	384	147	38.28%	\$50,407.62


Class Year	Solicitable Class Members*	Donors	% Participation	Money Received
1996	310	108	34.84%	\$40,845.19
1995	348	116	33.33%	\$21,879.53
1994	336	101	30.06%	\$37,328.04
1993	348	137	39.37%	\$66,583.50
1992	346	137	39.60%	\$33,005.38
1991	292	126	43.15%	\$75,375.57
1990	357	134	37.54%	\$35,613.00
1989	366	131	35.79%	\$133,071.23
1988	327	102	31.19%	\$40,049.17
1987	309	104	33.66%	\$71,455.36
1986	297	107	36.03%	\$26,056.00
1985	326	100	30.67%	\$115,840.47
1984	301	103	34.22%	\$32,629.65
1983	307	104	33.88%	\$26,462.87
1982	319	103	32.29%	\$207,496.50
1981	304	112	36.84%	\$71,799.44
1980	341	124	36.36%	\$266,568.60
1979	296	87	29.39%	\$72,088.88
1978	308	111	36.04%	\$188,064.25
1977	287	96	33.45%	\$49,783.98
1976	341	112	32.84%	\$84,632.72
1975	302	108	35.76%	\$85,628.23
1974	324	111	34.26%	\$100,655.00



Class Year	Solicitable Class Members*	Donors	% Participation	Money Received
1973	296	108	36.49%	\$42,115.00
1972	261	103	39.46%	\$50,529.71
1971	240	111	46.25%	\$37,857.52
1970	254	103	40.55%	\$209,623.11
1969	286	123	43.01%	\$66,854.61
1968	229	140	61.14%	\$115,215.82
1967	241	120	49.79%	\$73,492.24
1966	247	168	68.02%	\$4,100,097.01
1965	228	122	53.51%	\$123,337.17
1964	280	147	52.50%	\$315,054.15
1963	252	121	48.02%	\$82,115.65
1962	210	100	47.62%	\$611,038.11
1961	197	68	34.52%	\$172,423.69
1960	167	68	40.72%	\$49,610.00
1959	157	64	40.76%	\$144,651.98
1958	161	66	40.99%	\$26,175.95
1957	167	79	47.31%	\$58,133.34
1956	132	66	50.00%	\$123,278.00
1955	112	45	40.18%	\$170,839.37
1954	141	61	43.26%	\$34,315.98
1953	136	56	41.18%	\$178,939.17
1952	130	49	37.69%	\$26,434.09
1951	131	57	43.51%	\$5,344,530.49

Class Year	Solicitable Class Members*	Donors	% Participation	Money Received
1950	133	57	42.86%	\$2,073,092.02
1949	91	34	37.36%	\$13,005.00
1948	48	24	50.00%	\$71,708.64
1947	30	6	20.00%	\$1,270.00
1946	23	10	43.48%	\$2,625.00
1945	35	8	22.86%	\$5,065.00
1944	24	4	16.67%	\$425.00
1943	19	8	42.11%	\$4,975.00
1942	24	2	8.33%	\$225.00
1941	9	3	33.33%	\$15,100.00
1940	8	2	25.00%	\$1,720.70
1939	9	6	66.67%	\$705,295.00
1938	2	1	50.00%	\$0.00
1937	4	2	50.00%	\$1,775.00

\*In addition to the participation rates shared above, we wanted to share the fiscal year 2016 alumni participation rate, as it will be reported to the *U.S. News & World Report*. Alumni participation is the only alumni factor affecting the overall *U.S. News & World Report* ranking. That means participation is very important. *U.S. News & World Report* determines alumni participation by calculating the average percentage of undergraduate alumni of record who donated money to the College. Alumni of record are former full- or part-time students who received a degree and for whom the College has a current address. That is 6,631 donors out of 16,811 in the alumni base, which is a participation rate of 39.4%. Last year's *U.S. News & World Report* alumni participation was 38.3%.



Total receipts for fiscal year  
2016 — one-time gifts,  
payments on pledges, and  
realized bequests — reached  
**\$10.9 million.**





# Grinnell College Board of Trustees

## Officers

**Patricia Jipp Finkelman '80,**  
Chair

**Trish Fitzgibbons  
Anderson '80,**  
Vice Chair

**David B. Braman '75,**  
Vice Chair

**Raynard S. Kington,**  
President

**Susan M. Schoen**  
(Secretary of the College),  
Secretary

**Scott L. Wilson '98,**  
(Chief Investment Officer)  
Chief Investment Officer

**Kate E. Walker**  
(Vice President for Finance  
and Treasurer of the  
College), Treasurer  
Ex Officio Member

## Members

*The date in parentheses at the end of each  
listing indicates the year of election to the  
board.*

**Trish Fitzgibbons Anderson '80, B.A.,**  
M.A., Marriage and Family Therapist,  
Long Lake, Minnesota (2006)

**David B. Braman '75, B.A., M.B.A.,**  
Senior Partner, Pantheon Ventures  
Inc. (retired), San Francisco,  
California (2006)

**Laura M. Ferguson '90, B.A., M.D.,**  
Physician, Grinnell Family Medicine,  
Grinnell, Iowa (2003)

**Shelley Floyd '72, B.A., M.S., M.B.A.,**  
Technical Assistant to the Chairman,  
Intel Corp., Santa Clara, California;  
Portola Valley, California (2011)

**Harold W. "Hal" Fuson Jr. '67, B.A.,**  
M.S., J.D., Executive Vice President,  
Copley Press (retired), La Jolla,  
California; Encinitas, California  
(2004)

**Charles E. Gottdiener '86, B.A.,**  
M.B.A., COO and Managing  
Director, Providence Equity Partners,  
New York, New York; Tenaflly, New  
Jersey (2016)

**Atul Gupta '88, B.A.,** Chairman/CEO  
Advanced Technologies Group Inc.,  
West Des Moines, Iowa; Grimes,  
Iowa (2012)

**H. Steve Holtze '68, B.A., B.S., M.S.,**  
Chairman, Magnolia Hotel Co.,  
Denver, Colorado (2002)

**Michael B. Kahn '76, B.A.,** Senior  
Managing Director, TIAA, New York,  
New York; Huntington, New York  
(2015)

**John H. Kispert '85, B.A., M.B.A.;**  
Managing Partner, Black Diamond  
Ventures, Los Gatos, California;  
Atherton, California (2016)

**Clinton D. Korver '89, B.A., M.S.,**  
Ph.D., Venture Partner, Crescendo  
Ventures, Atherton, California (2001)

**Sylvia Kwan, B.S., Ph.D.,** Chief  
Investment Officer, SimplySmart  
Asset Management, Palo Alto,  
California; San Francisco, California  
(2010)

**Tobi Klein Marcus '87, B.A., M.S.,**  
Ph.D., Management Consultant,  
Marcus Partners LLC, Carmel,  
California (2014)

**David E. Maxwell '66, B.A., M.A.,**  
Ph.D., Consultant and Senior Fellow,  
Association of Governing Boards,  
Washington, D.C.; Asheville, North  
Carolina (2015)

**Paul A. McCulley '79, B.A., M.B.A.,**  
Managing Director and Chief  
Economist, PIMCO Advisors,  
Newport Beach, California (2009;  
Inactive, 2014))

**Susan Holden McCurry '71, B.A.,**  
Board Member, Holden Family  
Foundation, Naples, Florida, and  
Coralville, Iowa (2003)

**Kathryn Jagow Mohrman '67, B.A.,**  
M.A., Ph.D.; Professor, School  
of Public Affairs, Arizona State  
University (retired), former President,  
Colorado College; Chevy Chase,  
Maryland (2016)

**George Moose '66, B.A.,** Adjunct  
Professor, Elliott School of  
International Affairs, The George  
Washington University, Washington,  
D.C.; Arlington, Virginia (2014)

**Angela I. Onwuachi-Willig '94, Alumni**  
Council President (2016-17, ex officio  
voting member), Grinnell, Iowa

**W. Edward Senn '79, B.A.;** Vice  
President, State Public Policy and  
Government Relations, Verizon  
Communications, Washington, D.C.  
(2016)

**Karen E. Shaff, B.A., J.D.,** Executive  
Vice President and General Counsel,  
Principal Financial Group, Inc., Des  
Moines, Iowa (2007)

**M. Anne Campbell Spence '66,**  
B.A., Ph.D., Professor Emeritus,  
Department of Pediatrics, University  
of California, Irvine, California; San  
Luis Obispo, California (2001)

**Joel R. Spiegel '78, B.A.,** Vice President,  
Amazon.com (retired), Woodinville,  
Washington (2007)

**Barrett W. Thomas '97, B.A., M.S.,**  
Ph.D., Professor, University of Iowa,  
Tippie College of Business, Iowa City,  
Iowa (2005)

**Matthew E. Welch '96, B.A.,**  
M.P.A., Chief Operating Officer,  
Sustainability Accounting Standards  
Board, San Francisco, California  
(2013)

**Eric E. Whitaker '87, B.A., M.D.,**  
M.P.H., Chicago, Illinois (2008)

**Connie Wimer,** Owner and Chair,  
Business Publications Corp., Des  
Moines, Iowa (2014)

## Life Members

**Robert F. Austin Jr. '54, B.A., M.D.,**  
Pediatrician, Houston, Texas (2003;  
Life Trustee, 2015)

**Elizabeth Ballantine, B.A., M.A.,**  
Ph.D., J.D., McLean, Virginia (1980;  
Life Trustee, 2003)

**J. Robert "Bob" Barr '57, B.A., J.D.,**  
LL.B., Attorney, Sidley Austin  
(retired), Chicago, Illinois; Evanston,  
Illinois (1996; Life Trustee, 2008)

**Nordahl L. Brue '67, B.A., J.D.,**  
Attorney and Entrepreneur,  
Burlington, Vermont (1996; Life  
Trustee, 2008)

**Carolyn Swartz Bucksbaum '51, B.A.,**  
Chicago, Illinois (1970; Life Trustee,  
1998)

**John F. Egan '57, B.A., M.S., Ph.D.,**  
Vice President, Corporate Officer,  
Lockheed Martin Corp. (retired),  
Nashua, New Hampshire (2002; Life  
Trustee, 2014)

**Patricia Jipp Finkelman '80, B.A.,**  
M.B.A., Granville, Ohio (1998; Life  
Trustee, 2014)

**Kihwan Kim '57, B.A., M.A., Ph.D.,**  
Distinguished Visiting Research  
Professor, Korea Development  
Institute, Seoul, Korea (2003; Life  
Trustee, 2015)

**Todd C. Linden, B.S., M.A.,** President  
and CEO, Grinnell Regional Medical  
Center, Grinnell, Iowa; Brooklyn,  
Iowa (2000; Life Trustee, 2012)

**Caroline H. Little '81, B.A., J.D.,**  
President and CEO, Newspaper  
Association of America (retired),  
Washington, D.C. (1996; Life Trustee,  
2012)

**Fred A. Little Jr. '53, B.A., J.D.,**  
Attorney, Pillsbury Winthrop Shaw  
Pittman (retired), Washington, D.C.;  
San Francisco, California (1976; Life  
Trustee, 1996)



**Randall C. Morgan Jr. '65**, B.A., M.D., Orthopedic Surgeon, University Park Orthopedics, Sarasota, Florida; University Park, Florida (1993; Life Trustee, 2005)

**Robert C. Musser '62**, B.A., M.S., Controller, Mobil Corp. (retired), Alexandria, Virginia (1995; Life Trustee, 2007)

**Gregg Narber '68**, B.A., M.A., J.D., Ph.D., Longmont, Colorado (2000; Life Trustee, 2012)

**Patricia Meyer Papper '50**, B.A., Miami, Florida (1983; Life Trustee, 2003)

**John Roy Price Jr. '60**, B.A., M.A., J.D., President and CEO, (retired), Federal Home Loan Bank, Pittsburgh, Pennsylvania (1970; Life Trustee, 1995)

**Penny Bender Sebring '64**, B.A., M.Ed., Ph.D., Director, Consortium on Chicago School Research, University of Chicago, Chicago, Illinois; Evanston, Illinois (1993; Life Trustee, 2005)

**David P. White '90**, B.A., J.D., National Executive Director, Screen Actors Guild - American Federation of Television and Radio Artists, Los Angeles, California (1999; Life Trustee, 2015)

**Henry T. Wingate '69**, B.A., J.D., U.S. Chief District Judge, Southern District of Mississippi, Jackson, Mississippi (2000; Life Trustee, 2016)

## Alumni Council Members

**W. Edward Senn '79**, President

**James W. Asplund '88**

**Allison D. Brinkhorst '11**

**Peter S. Calvert '79**

**Cameo D. Carlson '93**

**Ryann Haines Cheung '93**

**James T. Decker '75**

**Jeetander Dulani '98**

**Catherine M. Gillis '80**

**Susan L. Henken-Thielen '80**

**Nancy Schmulbach Maly '61**

**Barbara Hunt Moore '65**

**Angela I. Onwuachi-Willig '94**

**Mary Knuth Otto '63**

**Ahsan Rahim '11**

**Richard J. Raridon '53**

**Jonathan J. Richardson '10**

**Rania Mohamed Robb '03**

**Saurabh Saraf '05**

**J. Frederick Schwaller '69**

**C. William Simmons '58**

**Rhonda A. Stuart '86**

**Richard A. Stuck '82**

**Lara E. Szent-Gyorgyi '89**

**J. Gof Thomson '62**

**Sherman P. Willis '01**

## Office of Development and Alumni Relations (DAR)

**Shane Jacobson**, vice president for development and alumni relations

**Jackie Aanes**, director of operations

**Angelina Ahrens**, assistant director of major gifts

**Meg Jones Bair**, director of board relations

**Brooke Benschoter**, associate director of alumni and donor relations

**Jillian Beukema**, senior associate director of annual giving

**Buddy R. Boulton**, director of planned giving

**Molly B. Campe '96**, senior associate director of alumni and donor relations

**Jayn Bailey Chaney '05**, director of alumni and donor relations

**Paul Chrisman '99**, technical assistant II

**Michelle Czarnecki**, assistant director for student programs

**Nathan Dobbels**, assistant director of alumni and donor relations for career programs

**Paige Everly**, associate director of alumni and donor relations for reunion and awards

**Kelly Garwood**, DAR systems support specialist

**Jennifer Gilbreath**, alumni and donor relations assistant

**Anna Halpin-Healy '13**, assistant director of alumni and donor relations for regional programs

**Nihad Heto '05**, assistant director of major gifts

**James Howard**, director of principal gifts

**Sarah Johnson**, assistant director of major gifts

**Brenda Kremer**, alumni and donor relations assistant

**Susan Kriegel**, development assistant

**Adam Laug**, director of development

**Sue Martindale**, database records services assistant

**Bonnie Megel**, annual giving and development assistant

**Beth Meldrem**, administrative assistant II

**Boyd Monson '16**, assistant director of annual giving for phonathon

**Janet Muckler**, operations manager

**Joy Murphy**, development and alumni relations receptionist

**Jessica Naughton**, assistant director of annual giving for reunion giving program

**Mae Parker**, director of annual giving

**Nino B. Parker '07**, associate director of alumni and donor relations for regional and special events

**Sara Root**, assistant director of development research

**Luke Saunders '12**, assistant director of DAR communications

**Daniel Say**, web specialist

**Michele Tanzosch**, alumni and donor relations assistant

**Julie VanErsvelde**, financial assistant III

**Vincent Walker**, associate director of major gifts

**Aamir Walton '15**, assistant director of annual giving for class fund director program

**Angela Winburn**, alumni engagement coordinator



GRINNELL COLLEGE

**For more information, please contact:**

Office of Development and Alumni Relations  
Grinnell College  
Grinnell, IA 50112

*Telephone:* 641-269-1846  
*Toll-free in the United States:* 866-850-1846  
*FAX:* 641-269-3222

*Email:* [development@grinnell.edu](mailto:development@grinnell.edu)